



*Featuring  
BROCK's Super Strong  
TRI-CORR® Bin Flooring  
and PARTHENON®  
Support for Bin  
Aeration Floor Systems*



**Brock TRI-CORR® Floor Profile**



**PARTHENON® Support Profile**



# DIFFERENT

## REVOLUTIONARY BIN AERATION FLOOR

The revolutionary design of Brock's unique TRI-CORR® Bin Aeration Flooring System gives it remarkable strength. Plus, it includes the best features of Brock's popular bin aeration floors to provide ample, even air distribution and to allow easy bin clean-out.

The patented Brock TRI-CORR Floor System can be used in bins ranging in diameters from 12 to 90 feet (3.7 to 27.4 m) and with eave heights up to 110 feet (33.5 m). Different by design, Brock named the unique floor TRI-CORR because of its distinctive triangle-shaped center leg and its strength-providing corrugations on the floor's surface and legs for added stability and long life.

## PROVIDES EVEN

### BROCK'S TRI-CORR® FLOOR DESIGN:

- ◆ Increases the overall strength and offers three times more support at the floor's crown compared to previous aeration floor designs.
- ◆ Features a **unique, triangle-shaped center leg**, reinforcing the center of the floor plank to help give the floor extraordinary strength and rigidity.
- ◆ Provides a **flat floor plank** for easier bin sweeping and grain clean-up operations.
- ◆ Designed so the **plank and the floor support perform as a unit**, standing up to the stresses of repeated loading and unloading.
- ◆ **Handles normal operating loads** imposed by most stirring devices.
- ◆ **Floor planks nest together more tightly**, making the floor plank bundles more stable and easier to handle during shipping and installation.




### FLOOR PLANKS

- ◆ With its innovative, strength-giving, modified "M"-shaped profile, every Brock TRI-CORR® System floor plank measures 7 inches wide x 1½ inches deep (178 x 38 mm).
- ◆ Brock's exclusive TRI-CORR Floor profile adds a unique middle support leg to the floor plank to provide a third weight-bearing point. Other floors use only two. This ground-breaking design gives tremendous strength to Brock's floor both for between supports and for transferring the weight load from the plank to the floor support.
- ◆ Planks are roll-formed from high-tensile, galvanized steel.
- ◆ To accommodate various sizes of grain, hole size options include openings that are .050 or .094 inches (1.3 or 2.4 mm) in diameter.



## TRI-CORR®



*Patented*

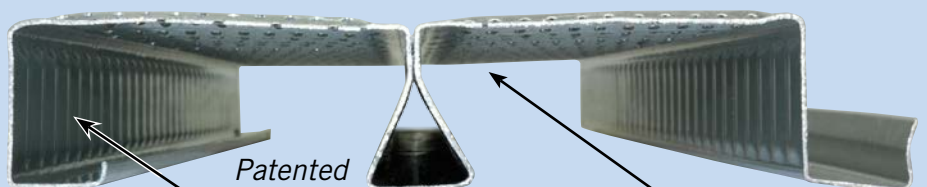
## AIR DISTRIBUTION

### BIN WALL FLASHING

- ◆ Galvanized steel flashing at the bin sidewall is perforated to allow maximum airflow.
- ◆ At the sidewall, the flashing is formed to match the wall's corrugation for a positive seal that also helps prevent grain loss.



### WHAT'S DIFFERENT ABOUT BROCK'S FLOOR?

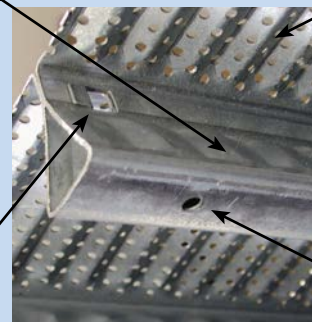


#### Brock TRI-CORR® Floor Profile

Corrugations on side supports and sides of triangle-shaped center support leg contribute added stability and increased strength.

A series of locking tabs secures the floor plank's center seam to keep grain out.

Floor design retrofits with previous Brock channel-lock aeration bin floors.



Available for all standard bin diameters up to 90 feet (27.4 m), Brock floors can be ordered for either full drying or other aeration configurations as desired.

The clear-punched aeration holes and flat crown of Brock's TRI-CORR® Floor aid bin sweeps and ease grain clean-up chores.

Holes in the bottom of the triangle-shaped center leg help to encourage air circulation as well as to prevent moisture accumulation.



## TWO STYLES OF FLOOR SUPPORT

**ROCK-SOLID  
SUPPORT!**

### **PARTHENON® GRAIN BIN FLOOR SUPPORT**

- ◆ The innovative Brock PARTHENON® Support System (patented) is designed specifically for use with Brock's TRI-CORR® Aeration Flooring and offers superior load-bearing capacity complementing the strength of the TRI-CORR Floor.
- ◆ Brock's PARTHENON Supports are available to provide 13<sup>3</sup>/<sub>4</sub>- or 18<sup>1</sup>/<sub>2</sub>-inch (349- or 470-mm) floor heights for grain drying and aeration. The low PARTHENON Support has enough floor clearance to allow for 10-inch (254-mm) diameter unloading systems.
- ◆ Quick and easy to install, the PARTHENON System requires only half the usual number of support rows, plus it reduces the number of supports needed by two thirds.
- ◆ PARTHENON Supports use a non-staggered installation and easily lock together with an included inter-lock system to eliminate movement.
- ◆ The support's design helps to compensate for uneven concrete flooring.
- ◆ Aerodynamic design of the support's built-in vertical column aids efficient airflow in tunnels and near fans.
- ◆ The combination of Brock TRI-CORR Floor Systems installed with PARTHENON Supports (patent pending) carries a five-year warranty. TRI-CORR or PARTHENON components installed separately carry a one-year warranty.

### **CHANNEL-LOCK SUPPORTS**

- ◆ Channel-lock supports are available to provide 13-, 16<sup>13</sup>/<sub>16</sub>- or 18<sup>1</sup>/<sub>2</sub>-inch (330, 427, or 470-mm) floor heights for grain drying and aeration.
- ◆ Set up is achieved with a snap and lock system that anchors each support securely to the TRI-CORR® Floor plank.
- ◆ Retrofits to Brock's old style channel-lock floors.



#### **BROCK GRAIN SYSTEMS**

A Division of CTB, Inc., A Berkshire Hathaway Company  
Milford, IN • Kansas City, MO • Frankfort, IN  
Phone: +1 574.658.4191 • Fax: +1 574.658.4133  
Internet: [www.brockgrain.com](http://www.brockgrain.com)  
E-mail: [brock@brockgrain.com](mailto:brock@brockgrain.com)